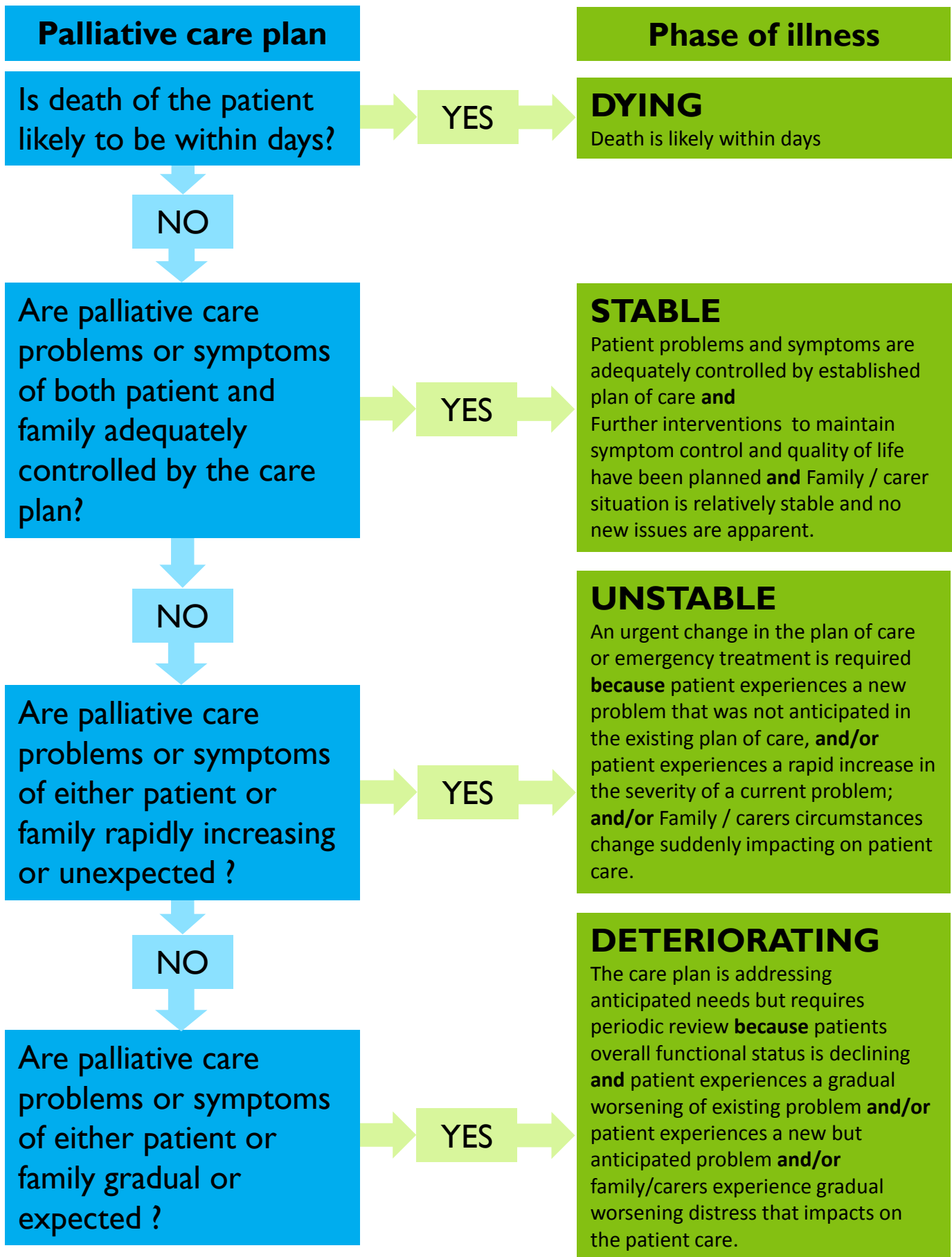


# Phase of illness allocation in accordance with phase definition



## References for Phase of Illness:

- Centre for Health Service Development: University of Wollongong. (1997). The Australian National Sub-Acute and Non-Acute Patient (AN-SN AP) Casemix Classification: Report of the National Sub-Acute and Non-Acute Casemix Classification Study.
- Eagar K, Green J, Gordon, R (2004). An Australian casemix Classification for palliative care: technical development and results. Palliat Med 18: 217-226.
- Eagar K, Gordon R, et al. (2004). An Australian casemix classification for palliative care: lessons and policy implications of a national study. Palliat Med, 18, 227-233.
- Masso M, Allingham SF, et al., (2015) Palliative Care Phase: Inter-rater reliability and acceptability in a national study. Palliat Med 29(1):22-30